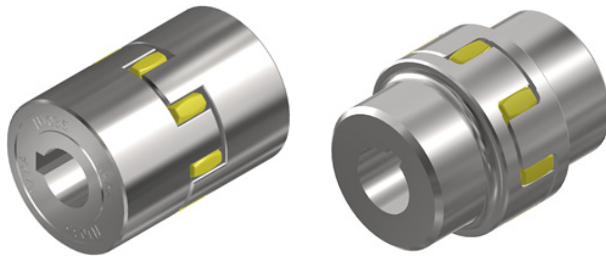


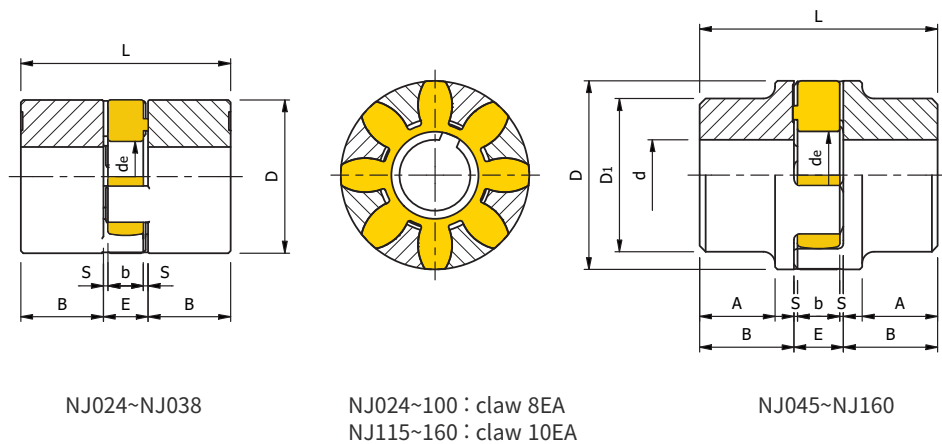
NJ type (Standard)

Features



- Hubs made from sintered metal (NJ038 or smaller) or carbon steel. (NJ045 or larger)
- No maintenance required.
- Excellent dynamic balance and flexibility, vibration damping and low mass inertia due to its compact design.
- Application
 - Hydraulic pump, elevator drive, industrial pump, industrial machine, steel plant
 - Insulation is possible

Dimensions



Size	Hub Material	Rated Torque (Nm)	Max Torque (Nm)	Max speed (rpm)	Dimensions(mm)											Mass (kg)	Moment of inertia (kgm ²)
					Inner bore(d)		D	D ₁	L	S	b	E	A	B	de		
					min	max											
024	●	10	20	5,000	7	24	40	-	66	2	12	16	-	25	16	0.5	0.000125
028	●	35	70	5,000	9	28	55	-	78	2	14	18	-	30	24	1	0.000475
038	●	95	190	4,000	11	38	65	-	90	2.5	15	20	-	35	30	1.6	0.00113
045	■	190	380	4,000	13	45	80	70	104	3	18	24	29	40	37	2.8	0.00298
055	■	265	530	4,000	19	55	95	80	116	3	20	26	34	45	45	4.5	0.00678
060	■	310	620	3,600	22	60	105	90	128	3.5	21	28	40	50	51	6	0.011
075	■	625	1,250	3,600	30	75	135	120	175	4.5	26	35	55	70	67	15	0.045
090	■	1,280	2,560	3,000	40	90	160	140	200	5	30	40	63	80	82	24	0.101
100	■	2,400	4,800	2,000	50	100	200	160	225	5.5	34	45	70	90	104	39	0.244
115	■	3,300	6,600	3,350	55	110	225	180	270	6	38	50	89	110	113	40.2	0.25976
125	■	4,800	9,600	2,950	55	120	255	200	295	6.5	42	55	96	120	127	56	0.42027
145	■	6,650	13,300	2,600	60	145	290	230	340	7	46	60	112	140	147	86.2	0.83426
160	■	8,550	17,100	2,350	60	160	320	255	375	7.5	50	65	124	155	165	118.3	1.38607

1. "●": Sintered, "■": Steel
2. Mass and moment of inertia are values without bore's machining.
3. For smaller size than NJ-024, refer to Smart Jaw Couplings